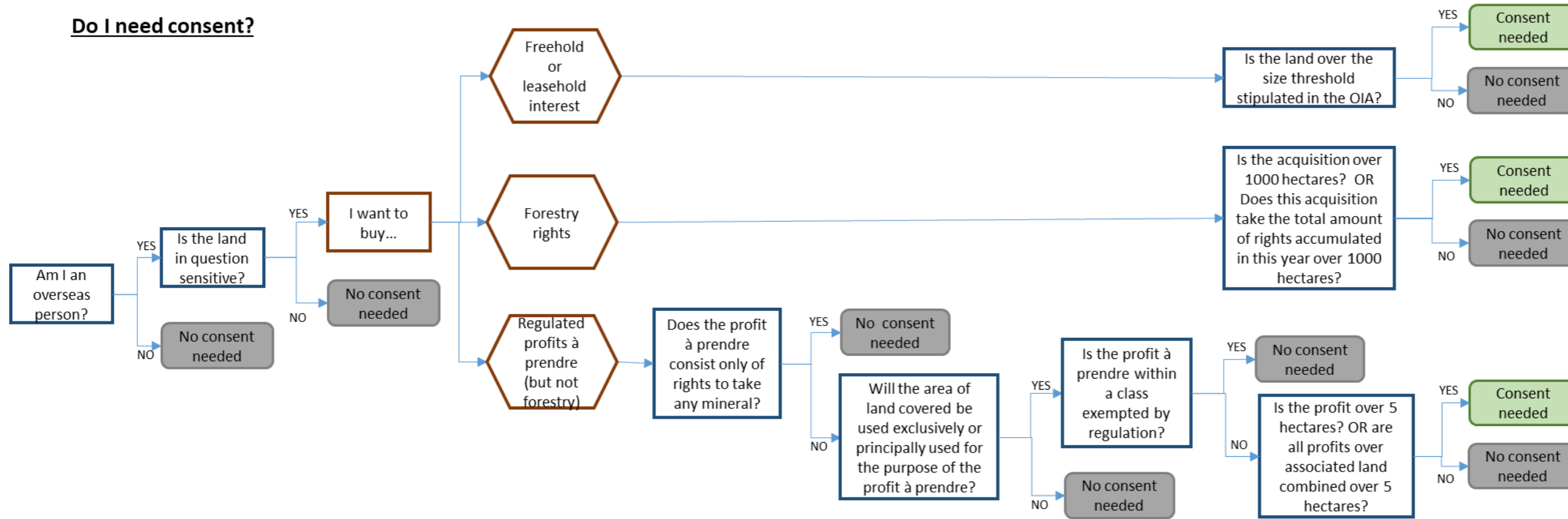


# SUMMARY OF CONSENT REQUIREMENTS AND PATHWAYS

## Do I need consent?



### Overseas person

Overseas person has the meaning set out in existing section 7 of the Overseas Investment Act 2005. It relies on the definition of “ordinarily resident in New Zealand” in existing section 6(2) of the Act.

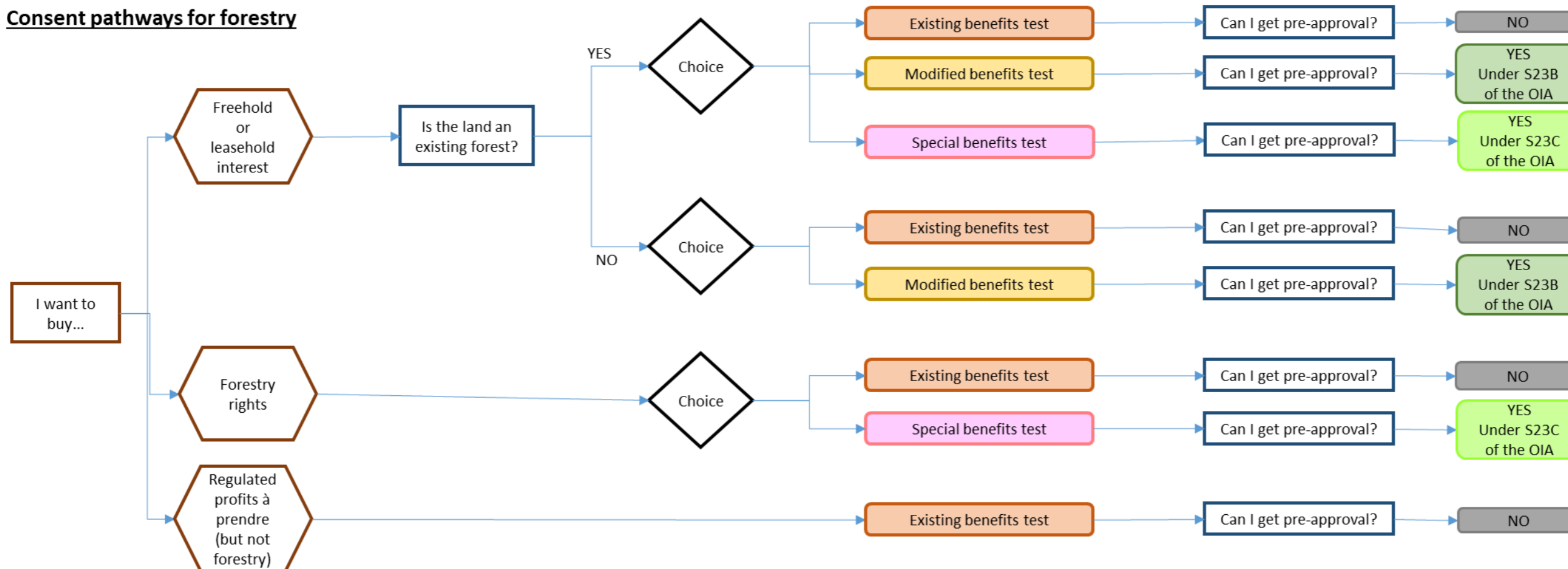
### Sensitive land

Sensitive land is defined in Schedule 1, Part 1 of the Overseas Investment Act 2005.

### Minerals

Minerals are defined in section 2(1) of the Crown Minerals Act 1991. This is a broad definition and includes “a naturally occurring inorganic substance beneath or at the surface of the earth”.

## Consent pathways for forestry



### Existing Benefits Test

The existing benefits test is set out in the new Section 16E(1) of the Bill.

### Modified Benefits Test

The modified benefits test is set out in the new Section 16E(2)-(3) of the SOP.

### Special Benefits Test

The special benefits test is set out in the new Section 16E(4)-(8) of the SOP and new regulation 28A.